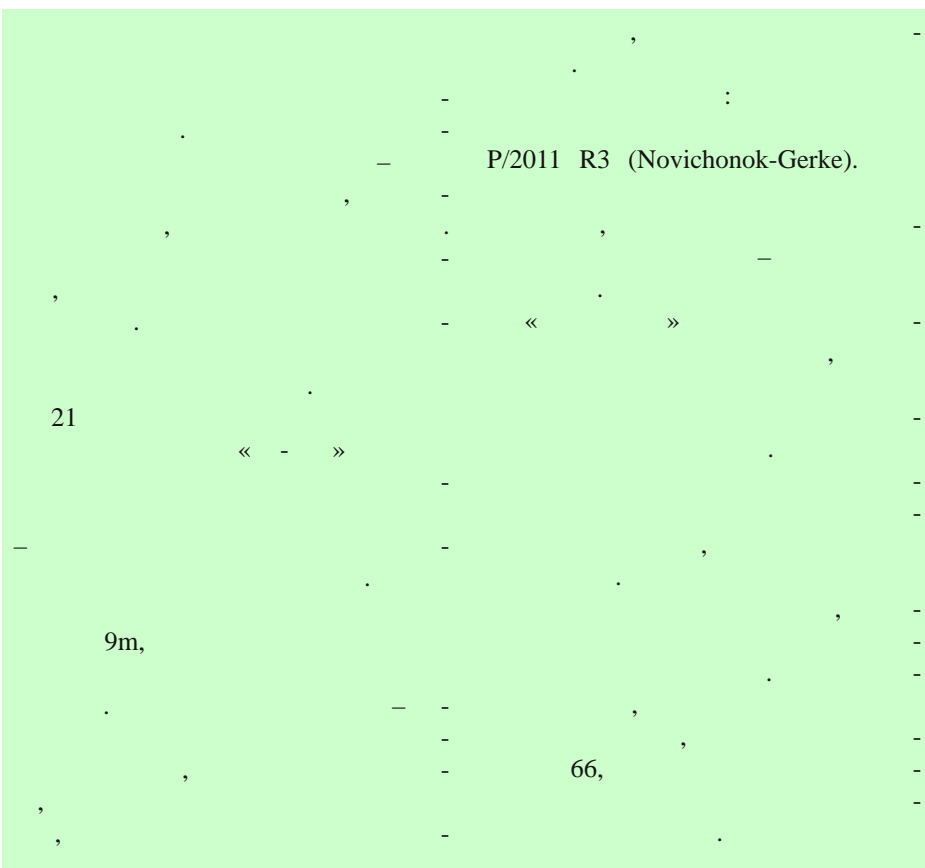
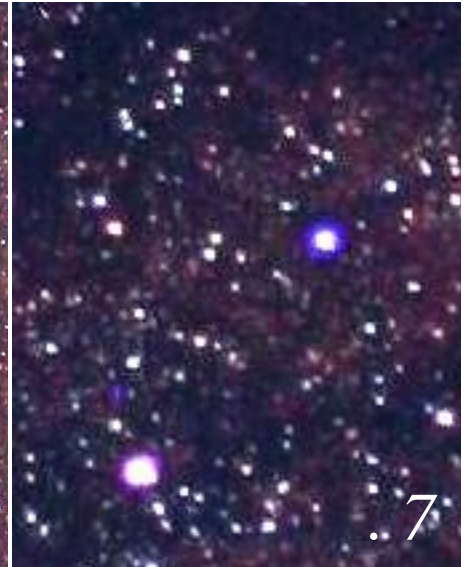
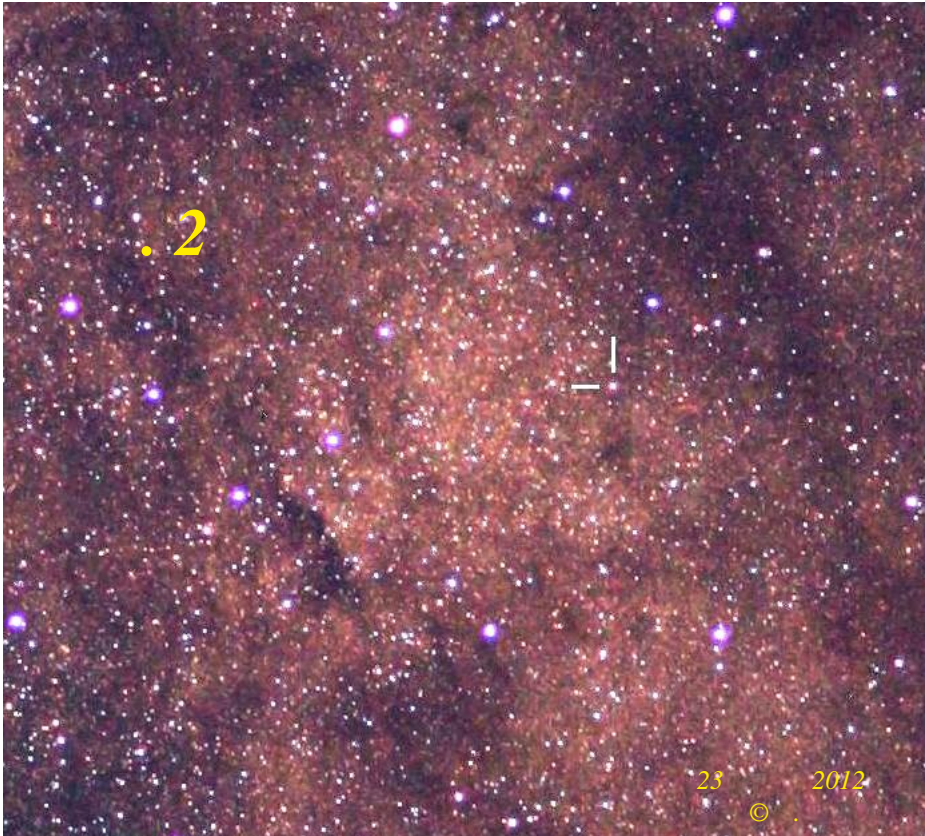




АСТРОНОМИЧЕСКАЯ ГАЗЕТА

№8 (48)
4 мая 2012 года



21 2012 -
«New
Milky Way»

[Redacted]



[Redacted]

2007 -

50 -

1.5- -

22.5m, -

80% -

10m (8 -

6m (1-2 -

80- -

2-3 -

(-

V838 Mon) -

(-

1992). -

« -

»? -

« -

» -

« - ».

!).

8

(

2-3

(,).

:

(

1992).

?

ESO,

40 1983

2009 !

10

4.5 (

— « ?». (SN 2008fe). 11m (C/2009 F6 Yi-SWAN). 2008 C/2009 F6 ? ? 135- Canon ! C/2009 F6 !!! ? 12m 2-3 2 50 300 3-4 2-3 2 2008 8m, New Milky Way «New Milky Way» 2010 (8 12 . .) : 1) 60 (2011, 17.5m) 5-6 ; 2) (2011) : 3) 2009 Canon 20D « -61», f/4.0. 12.5m, P/2011 R3 Novichonok–Gerke) EQ- 2 MODE (40).

MaxIm DL

ST-2000XM

DSLR

SBIG
ST-8300M,

23x18 5.4

HEQ-5 Pro,

«ST».

50

• 8 2011 ()

17.5m.

• 22 1990 « » Vel XR –

• 11 1983 ()

15m (, , ()).

• 29 1970 ()

12.6m, 8m.

• 20 1961 () 13.8m

• 29 1960 7m.

100

• 10 1901 ()

1901), . 8

• 1920

• 1936

• 1946 () –

(VAST).

2).

50%

8.25"/pix,
40 000
5x7

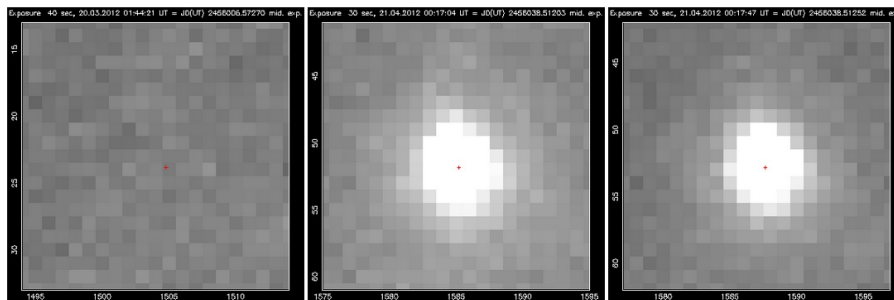
14.0m (

» – Canon 135/2.0L USM. 30 2011

8300

2010

42459_Sgr1_201_rename_001.fts



Date (UTC)	JD (UTC)	Mag.	R.A. & Dec. (J2000)	Image
Discovery image 1	2012 04 21.0120 2456038.5120	9.63	17:45:27.91 -23:05:21.3	/ant/usb2/Sgr1_2012-4-21_0-17-45_002.fts
Discovery image 2	2012 04 21.0125 2456038.5125	9.63	17:45:27.91 -23:05:21.4	/ant/usb2/Sgr1_201_rename_001.fts

Mean magnitude and position on the discovery images:
 2012 04 21.0123 2456038.5123 9.63 17:45:27.91 -23:05:21.3
 Maximum position difference between discovery images is 0.000028 degrees (.100800 arcsec).
 The object was found in VSX
 53" OGLE-BLG-RRLYR-02100

Type: RRAB
 # Max. Min./Amp. JDO Period
 18.596 Ic (0.446 Ic 2455000.0557 0.55566926
 117" OGLE-BLG-RRLYR-02109

Type: RRAB
 # Max. Min./Amp. JDO Period
 16.408 Ic (0.606 Ic 2455000.0543 0.55487898

The object was not found in astcheck.
[Search this object in SIMBAD.](#)
[Search for previous observations of this object in the NSVS database.](#)

Preview of the reference image(s) and two 2nd epoch images:



(
).
 : VSX (AAVSO),
 MPCheker ()
 ;) SIMBAD (
).

2012

1m.

23 4

2

14m.

2

3-4
 4- ?
 -10°C
 -15°C.
 (EQ-MODE)
 2

Эксп.		SNR 20	SNR 50	SNR 100
1 сек.	12,1	10,4	8,9	8
3 сек.	13,1	11,6	9,8	8,5
5 сек.	13,5	12,1	10,9	9,6
10 сек.	14,4	12,8	11,3	9,9
60 сек.	15,4	13,9	12,7	11,6
90 сек.	15,7	14,4	13,4	12,3

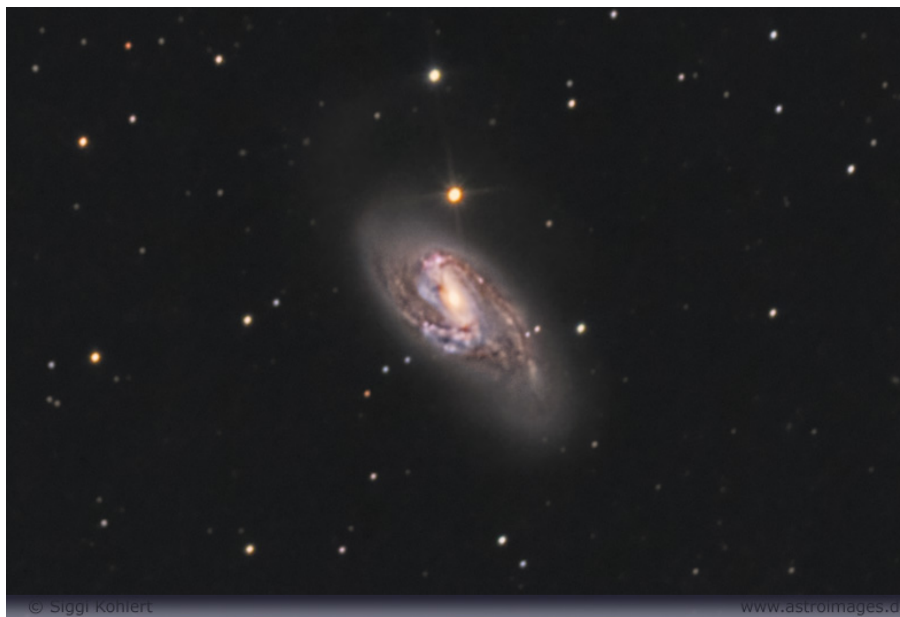
135-
 «New Milky Way»,

25/26

2012



! / 20, 50 100
)!
 (2-3 !) 9.6m -
 TOCP,
 +15°C, +5°C, ! « »
 130 UV
 13m,
 21
 10
 !
 ! - « » : TOCP
 8.25"/pix
 1
 (DSS) 18m,
 2-3
 9m -
 50 - 5 000 !
 (- . 10.



66 (NGC 3627)
87
9.1'x4.2'
32.8
 RA.....11 20.2
 DEC.....+12° 59
9.0m

1 1780
 1773
 66 «
 3'x2'».
 66 65.
 1918
 : «
 8'x2.5',
 ».

66
 33
 65

NGC 3628 –
 400 (40').

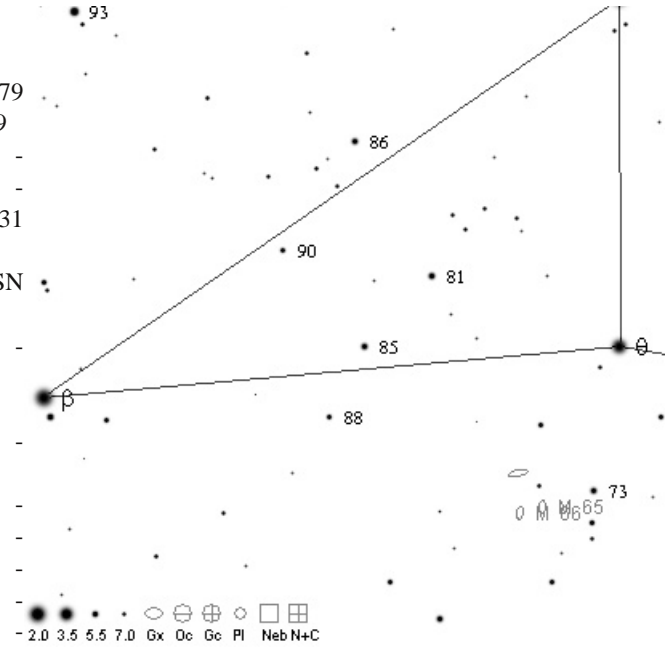
66
 16.
 66
 3
 – SN 1979R (15m 12 1979); SN 1989 (1989 12.2m); SN 1997bs (15 1997 17m).

, SN 1997bs,

« » 1961V NGC 1058
 1954J NGC 2403.

65 NGC 3628 66 -
 «
 », -
 NGC 3593.
 65 66
 10x50. 20', -
 5 66
 65,
 4.5'x2'
 14 -
 66 -
 2' -
 66 -
 « » -
 66.

Stoyan R. et al. Atlas of the Messier Objects: Highlights of the Deep Sky — Cambridge: Cambridge University Press, 2008.



HEQ-5 Pro 3-4 135-

Swift.

17.5m

9 ()

8.8m! 10 000

21/22 25 (

70)

4 ()

10.2m.

CBET 3089

36

12m

200

150 ()

6500 /

Swift'

13.5m.

New Milky Way

2012

28 2012

11.5m.

1	2012	«
»		
		(
		1 2012
)
		:
1	- 20	(0.75\$)
1	- 38	(1.5\$)
3	- 108	(4\$)
6	- 198	(7\$)
1	- 360	(13\$)

agaz@list.ru.



« 8 (48), 4 2012 »

: http://www.waytostars.ru/index.php/gazeta

« »:

http://www.severastro.narod.ru

: agaz@list.ru